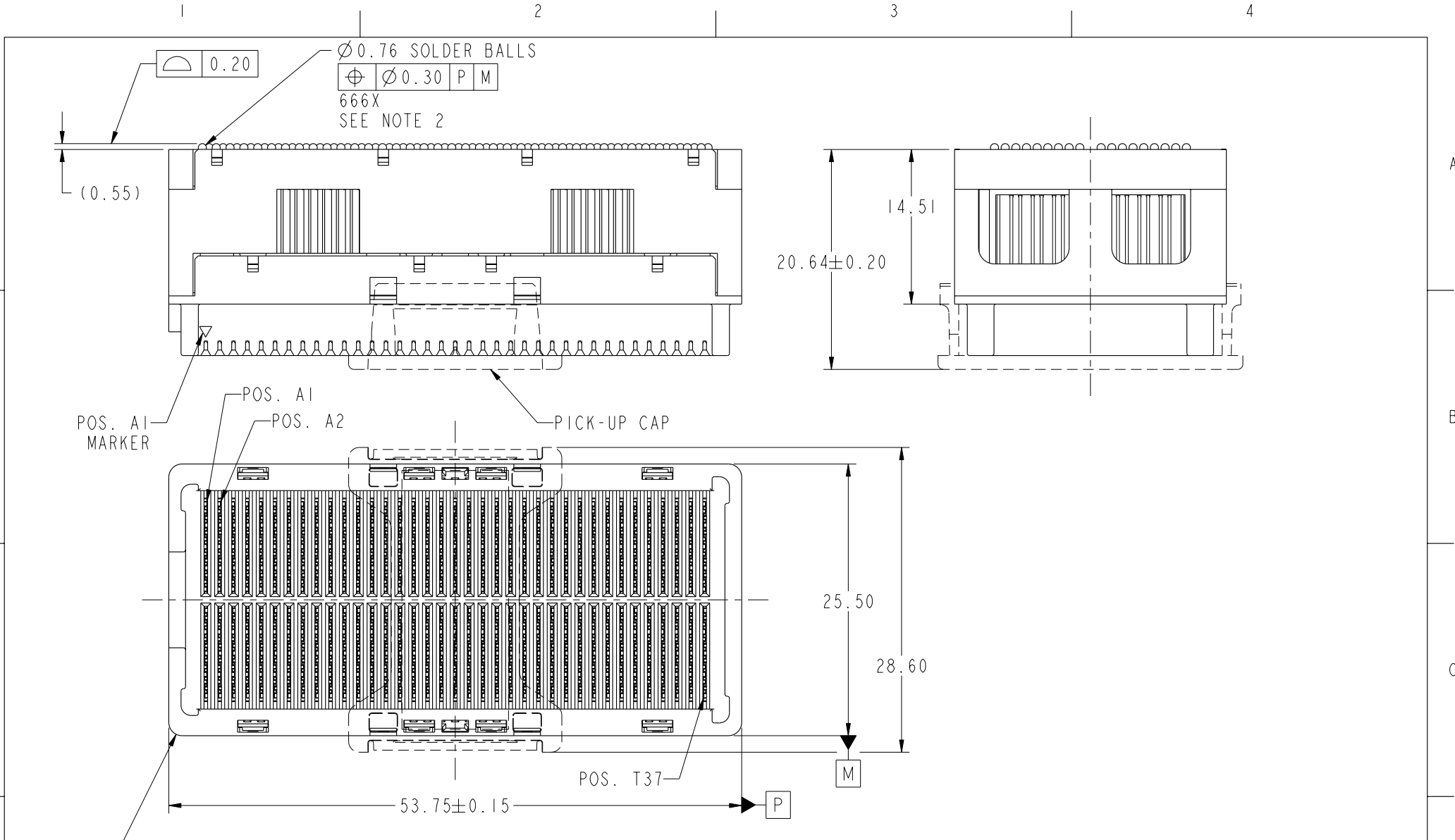




Copyright FCI.



REV F - 2006-04-17

rev	ecn no	dr	date
A	V21718	GIP	12/14/02
B	V03-1036	TAB	09/15/03
C	V05-0052	VS	10/14/05
D	V06-0435	LP	2006/05/08
E	V06-0558	LP	2006/06/21
-	-	-	-
-	-	-	-

www.fciconnect.com		surface 3.2 ASME Y14.5	tolerance std -	projection ASME	mm
TOLERANCES UNLESS OTHERWISE SPECIFIED		ANGULAR	LINEAR	size A4	Scale 1:1
Dr	G. PETERS	12/11/02	0.X ±0.3	ECN	V06-0558
Eng	M. STRAWSER	12/13/02	0.XX ±0.10	Spec ref	-
Chr	G. PETERS	12/14/02	0.XXX ±0.050	Product family	GIG-Array
Appr	M. STRAWSER	12/13/02		dwg no	55733
FCI		GIG-Array 15mm RECPT. ASSEMBLY, 296 SIGNAL POSI.		Rev.	E
catalog no		-		CUSTOMER	sheet 1 of 4

1 2 3 4

KEY ORIENTATION
SILK-SCREEN
(OPTIONAL)

SEE NOTES
4 & 5.

④ CONTACTS IN
ROWS J & K ARE
TIED TOGETHER
(COMMONED)

A
B
C
D
E
F
G
H
J
K
L
M
N
P
Q
R
S
T

Ø 0.60
Ø 0.55
PAD SIZE
666X
SEE NOTE 6

0.65
73X

1.30
36X

23.725

47.45

(53.75)

(R1.25)
4X

2.00

18.00

(25.50)

1.00
8X
(2 PLACES)

STENCIL CONNECTOR OUTLINE
ONTO BOARD.

BOARD PATTERN



Copyright FCI.

	title	GIG-Array 15mm RECPT. ASSEMBLY, 296 SIGNAL POSI.	dwg no	55733	Rev.	E
	catalog no	-	CUSTOMER	sheet 2 of 4		

REV F - 2006-04-17

2

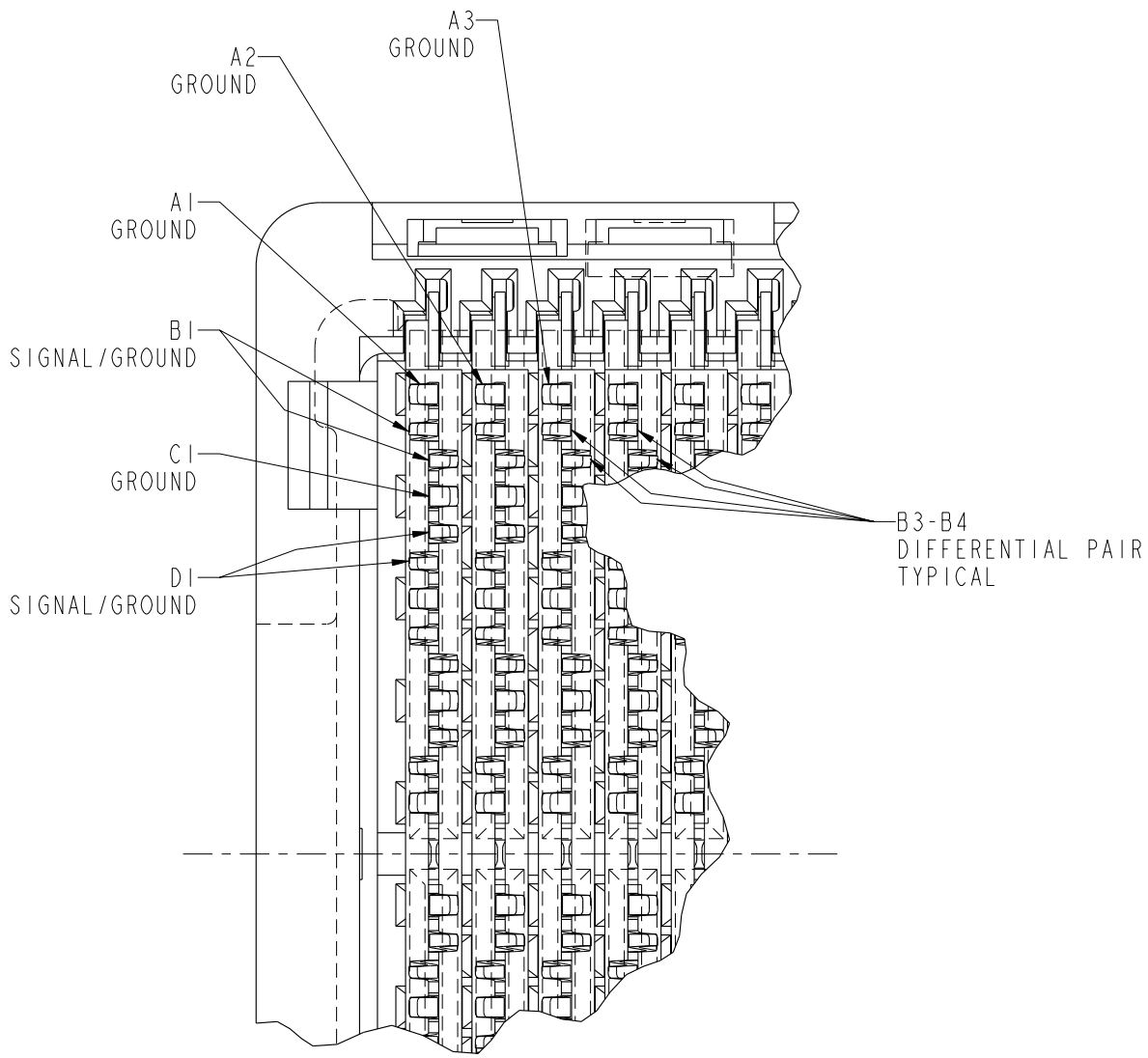
PDM: Rev:E

STATUS:Released

4 Printed: Dec 03, 2007



Copyright FCI.



RECEPTACLE INTERFACE DESCRIPTION

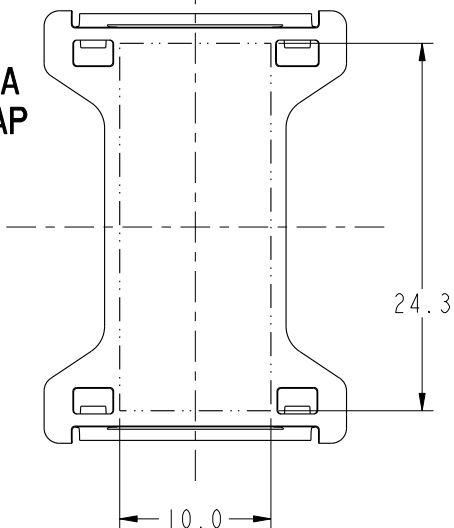
NOTES:

- ① MATERIAL:
 HOUSING: LCP
 CONTACT: COPPER ALLOY
 PLATING (CONTACT): Au OVER Ni.
 UL RATING: 94 V-0
 SOLDER BALL: (SEE TABLE) EUTECTIC SnPb OR LEADFREE 95.5 Sn/4Ag/0.5Cu
- ② SOLDER BALLS WILL NOT BE PERFECT SPHERICAL SHAPE DUE TO REFLOW ATTACHMENT.
- ③ MATED HEIGHT EFFECTED BY CUSTOMERS' PCB PAD SIZE, PLATING, SOLDER REFLOW PROFILE & SOLDER PASTE.
- ④ CONTACTS IN ROWS A,C,E,G,J,K,M,P,R AND T ARE SINGLE BEAM CONTACTS, TYPICALLY USED AS GROUND PINS. (NOTE: CONTACTS IN ROWS J & K ARE TIED TOGETHER [COMMONED])
- ⑤ CONTACTS IN ROWS B,D,F,H,L,N,Q AND S ARE DUAL BEAM CONTACTS, TYPICALLY USED AS SIGNAL PINS.

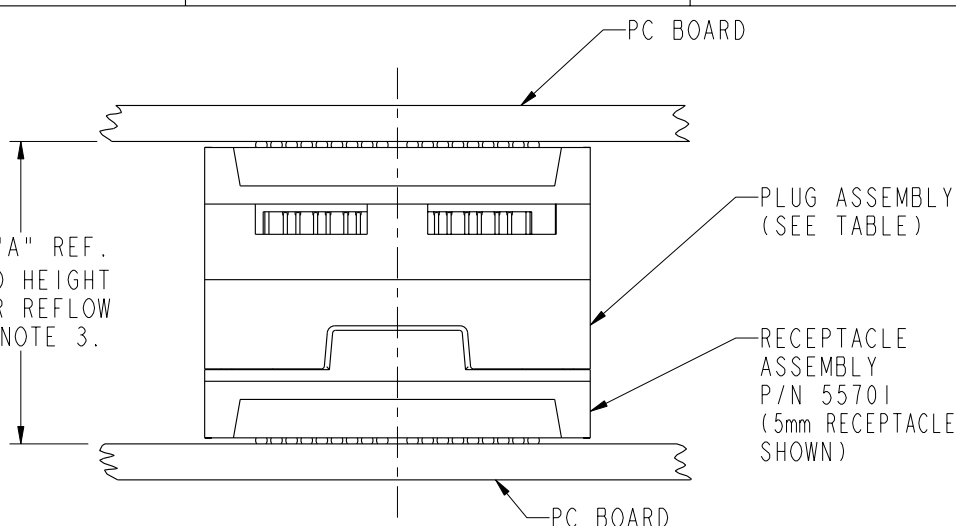
	title	GIG-Array 15mm RECPT. ASSEMBLY, 296 SIGNAL POSI.		dwg no	55733	Rev.	E
	catalog no	-	CUSTOMER	sheet 3 of 4			

PRODUCT NUMBER	SOLDER BALL
55733-001	SnPb
55733-001LF	SnAgCu LEADFREE (7)(8)

**FLAT AREA
PICK-UP CAP**
SCALE 2:1



DIM "A" REF.
MATED HEIGHT
AFTER REFLOW
SEE NOTE 3.



END VIEW OF MATED CONNECTORS
SCALE 2:1

DIM. "A"	PLUG ASSEMBLY P/N
25	55720
27	10026804
28	10008026
30	55700
35	55727

NOTES CONTINUED

- (6) SPECIFIED POSITIONAL TOLERANCE DEFINES PAD TO PAD LOCATION WITHIN LAND PATTERN. POSITIONAL TOLERANCE OF LAND PATTERN TO FUDICIAL MARKS OR PCB DATUMS SHALL BE DEFINED BY CUSTOMER. FOR RECOMMENDED PRODUCT APPLICATION AND PCB DESIGN DETAILS, SEE DOC. NO. GS-20-016.
- (7) FOR PROPER APPLICATION FOLLOW FCI APPLICATION SPECIFICATION GS-20-033 LEADFREE SOLDER BALLS WILL NOT SOLDER PROPERLY IN A LEADED SOLDER PROCESS DUE TO A HIGHER REFLOW TEMPERATURE, LEADFREE PRODUCT IS THEREFORE NOT BACKWARDS COMPATIBLE WITH LEADED OR SOME SOLDERING APPLICATIONS. REFERENCE FCI APPLICATION SPECIFICATION.
- (8) THIS PRODUCT MEETS THE EUROPEAN UNION DIRECTIVES AND OTHER COUNTRY REGULATIONS AS DESCRIBED IN GS-22-008. PRODUCT MEETING WITH THIS DIRECTIVE IS IDENTIFIED IN THE LOT CODE NUMBER MARKED ON EACH PART BY HAVING AN "X" IN THE SEVENTH CHARACTER POSITION.



TITLE GIG-Array 15mm RECPT. ASSEMBLY, 296 SIGNAL POSI.	dwg no 55733	Rev. E